

## 50M/50K/26.2 Detail Maps/turn-by-turn instructions

There are 10 detail maps; use this table to locate the ones you need for your distance

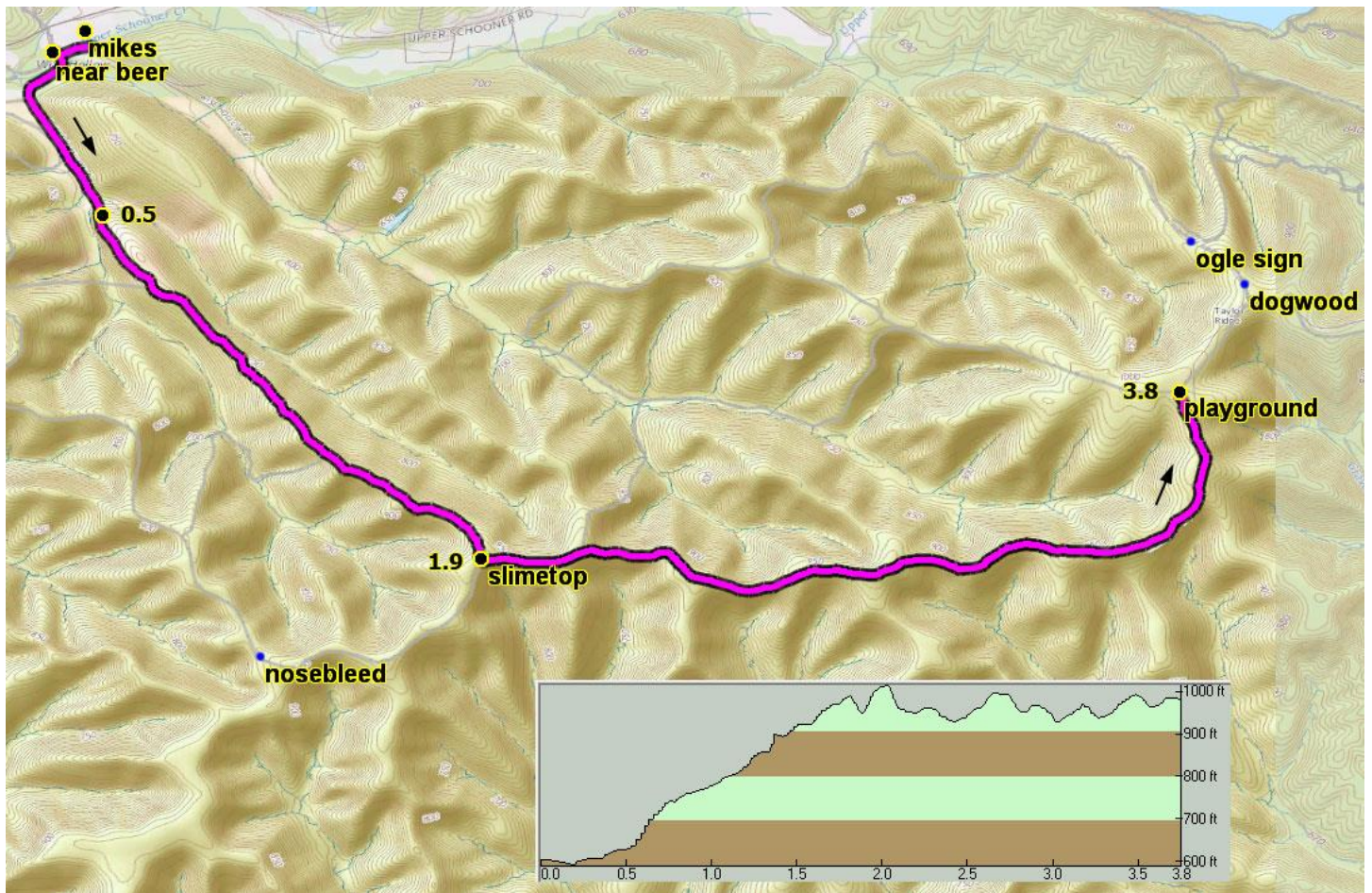
### Table of Contents

50M	50K	26.2	Leg	From	To	Length
1	1	1	A	Start	Playground	3.8
2	2		B	Playground	Ogle Lake	3.3
3	3		C	Ogle Lake	Hoosier's Nest	3.5
		2	D	Playground	Hesitation Point	4.5
4	4		E	Hoosier's Nest	Hesitation Point	2.0
5	5	3	F	Hesitation Point	Aynes	3.0
6	6	4	G	Aynes	North Tower	4.0
7	7	5	H	North Tower	Fire Tower	3.2
8	8	6	I	Fire Tower	Playground	4.5
	9	7	J	Playground	Finish	3.8
9			D	Playground	Hesitation Point	4.5
10			F	Hesitation Point	Aynes	3.0
11			G	Aynes	North Tower	4.0
12			H	North Tower	Fire Tower	3.2
13			I	Fire Tower	Playground	4.5
14			J	Playground	Finish	3.8

## A - Start to Playground

3.8 miles

+690/-310



Leave Mike's and head Left/South on the gravel road; turn right

when you cross the bridge

0.5 exit gravel road to right, up the hill by the house

0.6 cross field at top of hill into The Slime Climb

1.9 Exit the Slime; LEFT onto horse trails

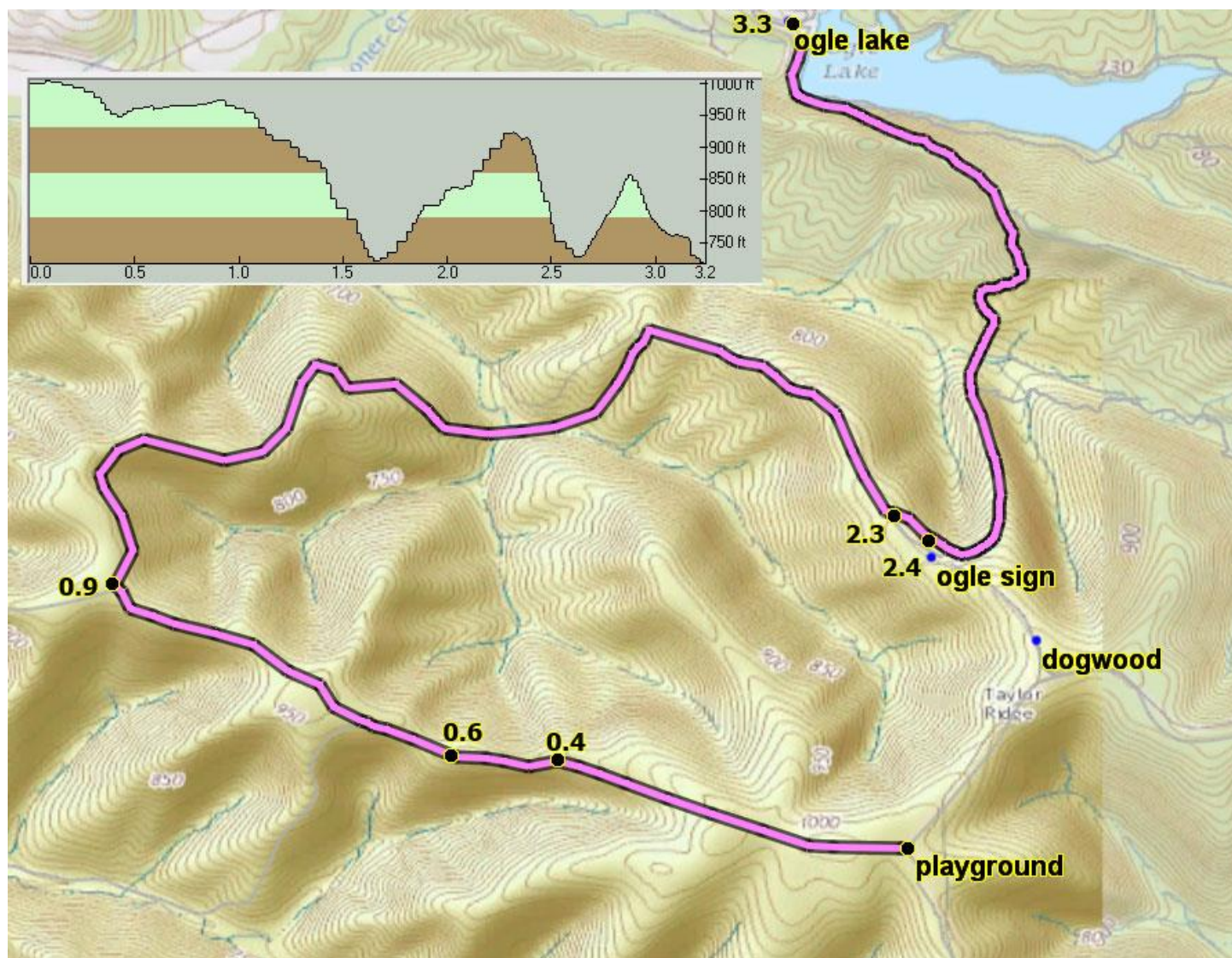
3.8 Arrive Playground Aid



## B – Playground to Ogle Lake

3.3 miles

+370'/-650'



Leave Playground Aid to LEFT along campground road

0.4 Exit road to LEFT onto trail 9 (at toilet)

0.6 Stay RIGHT at split

0.9 Stay Right at bench

2.3 Stay LEFT onto single track (not straight on old 2-track

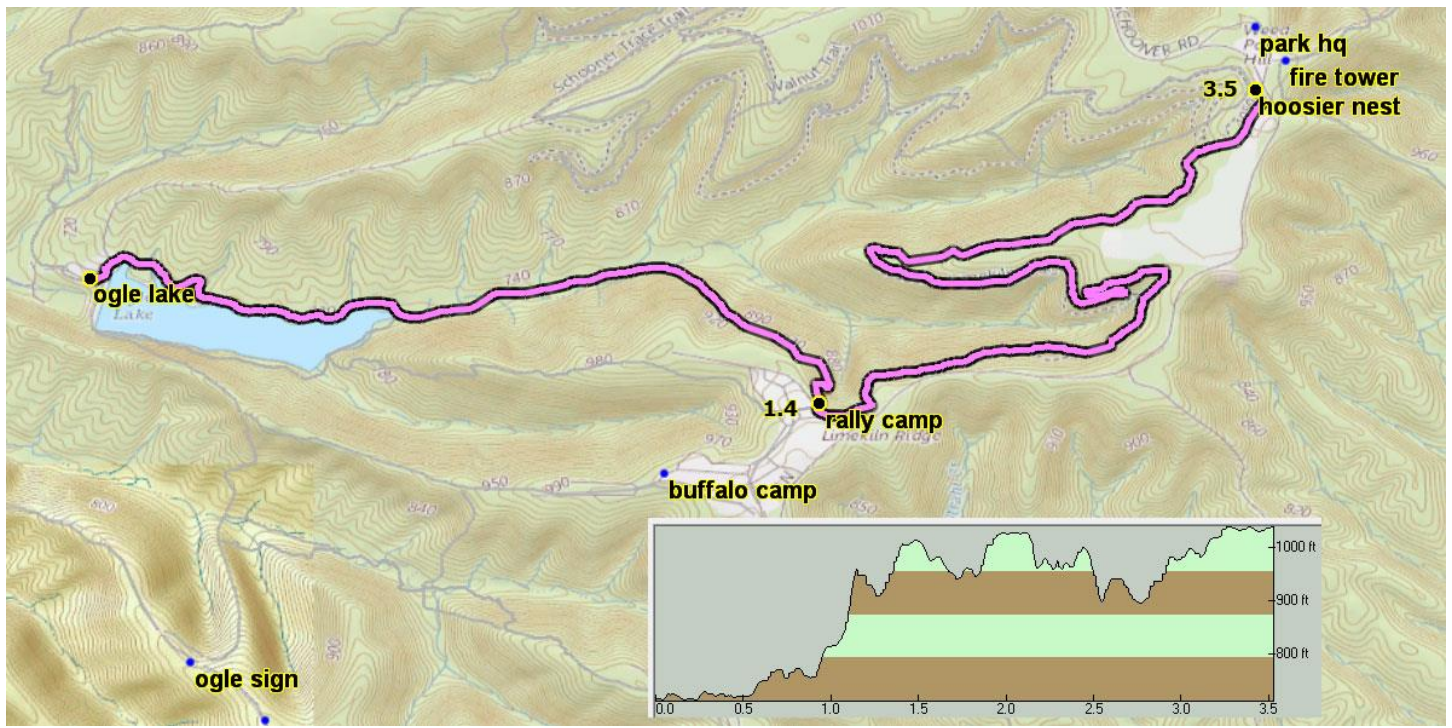
2.4 Stay LEFT at big sign

3.3 Cross Ogle Dam & find mini-aid (self-serve water only)

C - Ogle Lake to Hoosier's Nest

3.5 miles

+860'/-530'



Follow Trail 7 around lake clockwise

1.4 Climb stairs then stay LEFT along tree line and road

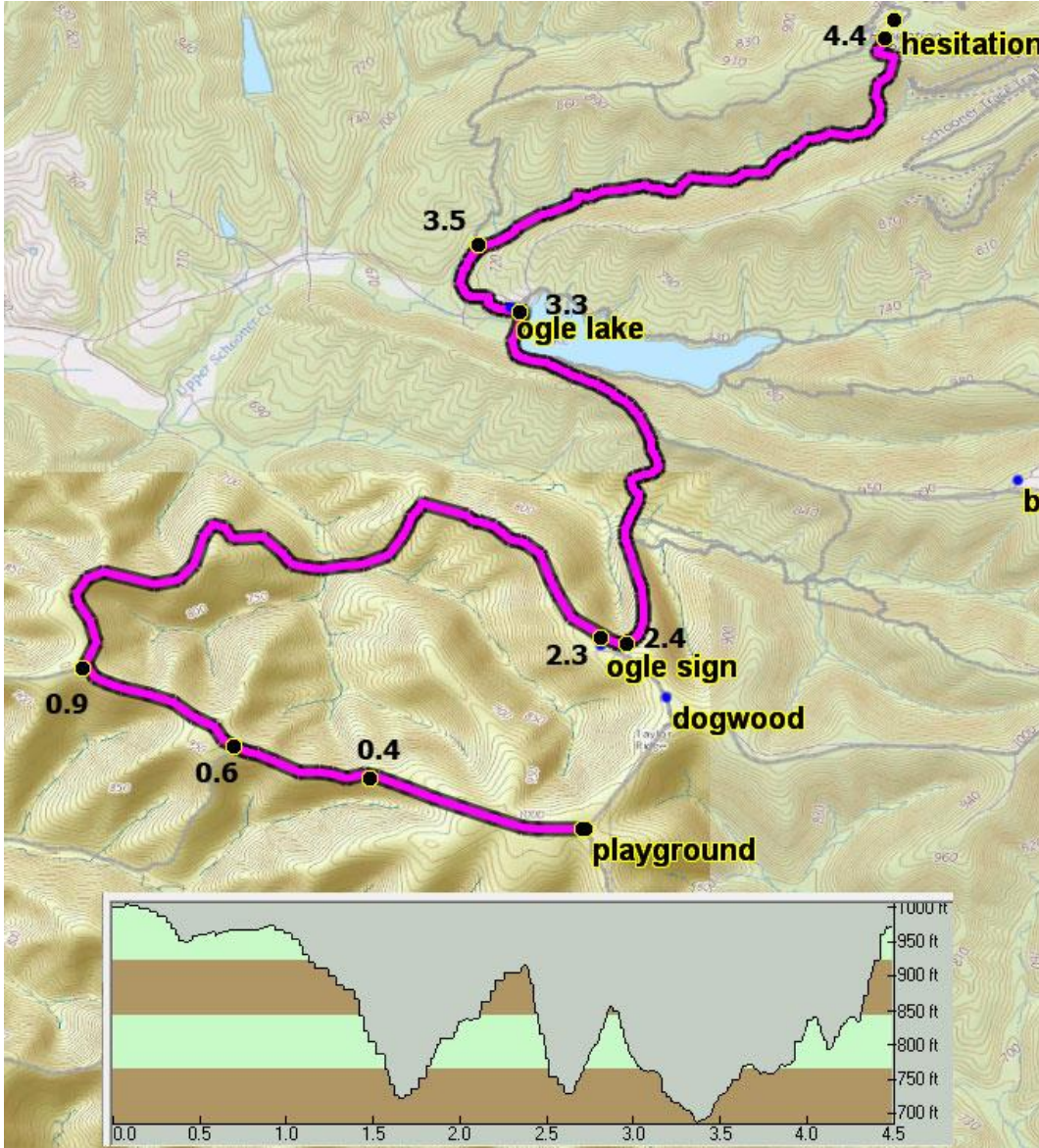
3.5 Arrive Hoosier's Nest Aid



## D - Playground to Hesitation Point

4.5 miles

+720/-750



Leave Playground Aid to LEFT along campground road

0.4 Exit road to LEFT onto trail 9 (at toilet)

0.6 Stay RIGHT at split

0.9 Stay Right at bench

2.3 Stay LEFT onto single track (not straight on old 2-track)

2.4 Stay LEFT at big sign

3.3 Cross Ogle Dam then LEFT thru parking lot, pass toilets and playground onto Trail 8

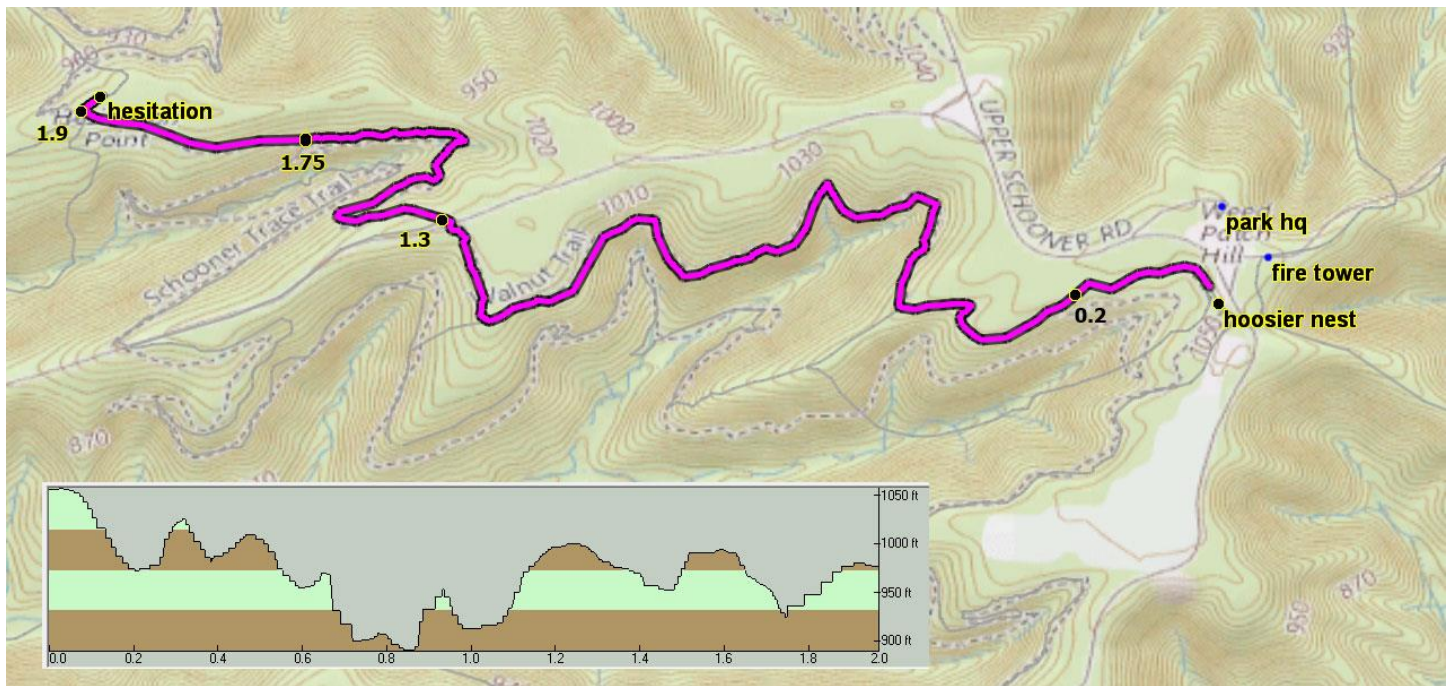
3.5 Stay RIGHT

4.4 Straight thru the gate, cross the road to Hesitation Point Aid

## E - Hoosier's Nest to Hesitation Point

2.0 miles

+350'/-430'



Head towards road from Aid but turn LEFT onto single track

0.2 Stay RIGHT

1.3 Cross Ogle Lake Access Road

1.7 Stay RIGHT

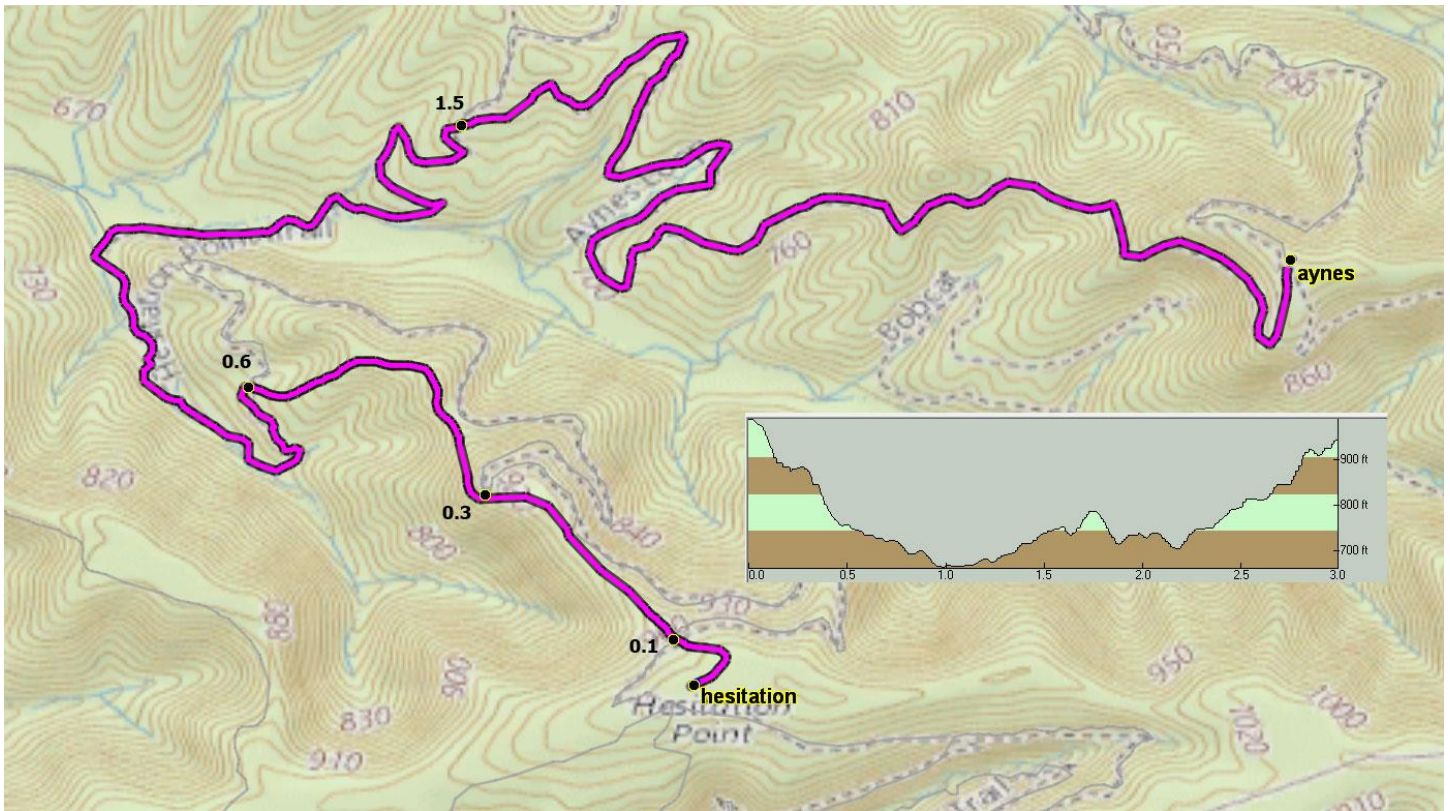
1.9 Turn RIGHT, cross road to Hesitation Point Aid



## F - Hesitation Point to Aynes

3.0 miles

+450/-510



Head down the hill from Aid

0.1 Continue straight

0.3 Stay to the LEFT

0.6 Turn LEFT at bottom of hill

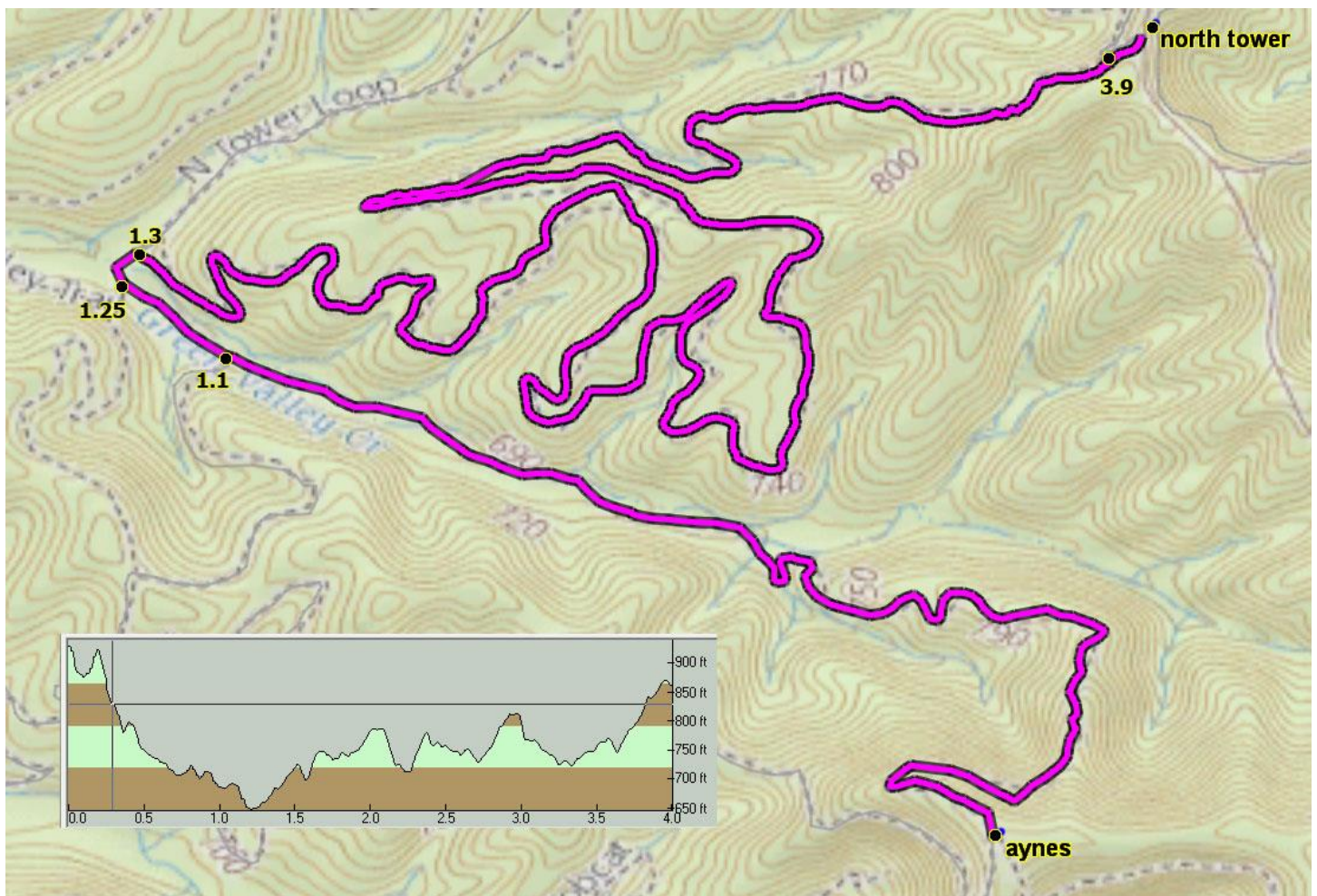
1.5 Turn RIGHT on Aynes loop

3.0 Arrive Aynes mini-aid (self-serve water only)

## G - Aynes to North Tower

4.0 miles

+460/-510



Continue straight across fire trail

1.1 Stay RIGHT as trail joins from left

1.25 Turn RIGHT as trail joins from left

1.3 Turn RIGHT on Aynes MTB loop

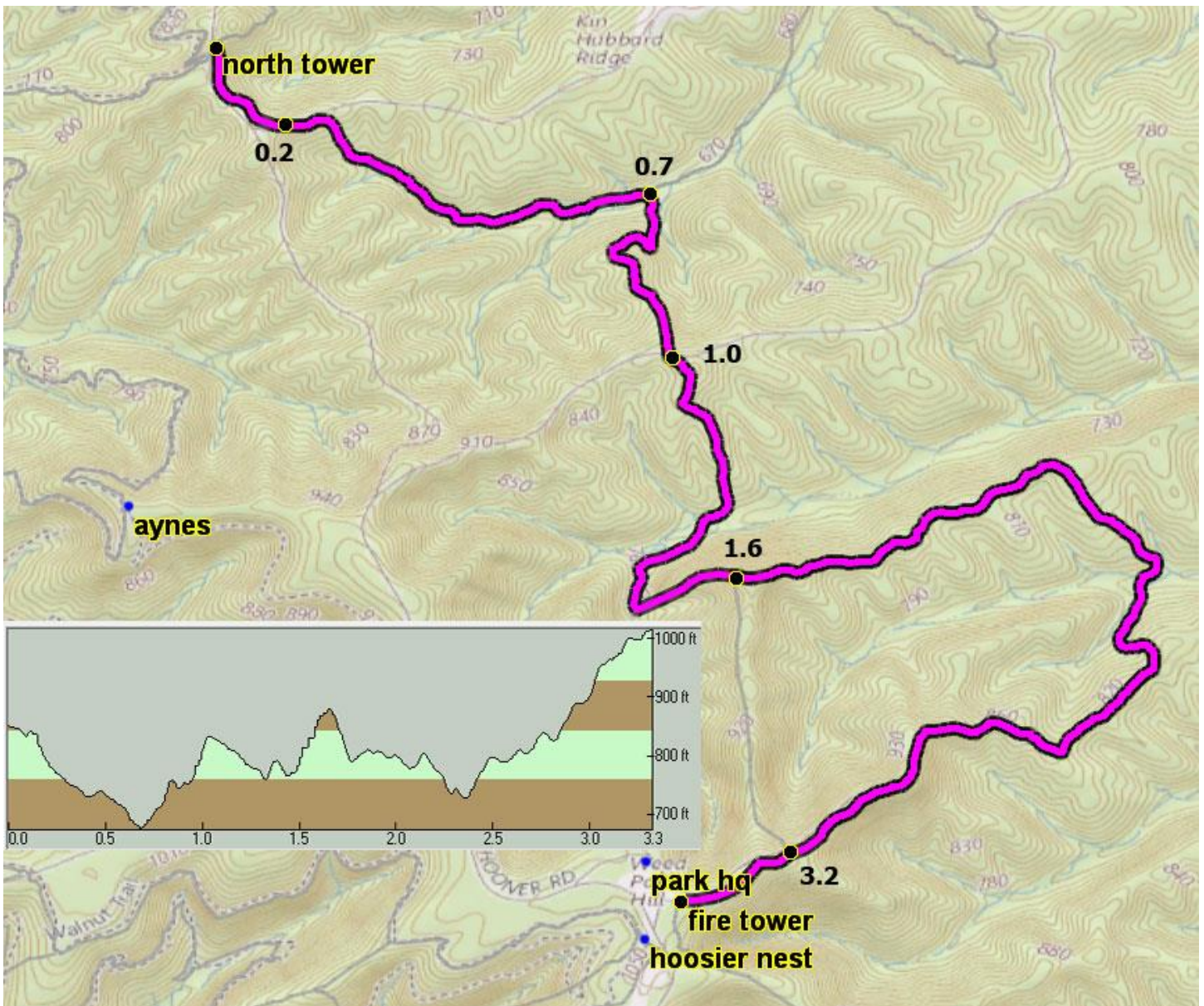
3.9 Turn RIGHT, cross road (CAREFUL!) to Aid



## H - North Tower to Fire Tower

3.3 miles

+720/-560



Depart sharp RIGHT onto single track/horse trail

0.2 cross Abe Martin Lodge driveway

0.7 WATCH FOR IT: leave horse trail RIGHT cross small stream into vague single track

1.0 cross park road, back into the vague stuff

1.6 leap small split rail fence and turn LEFT; relay runners may be approaching from south

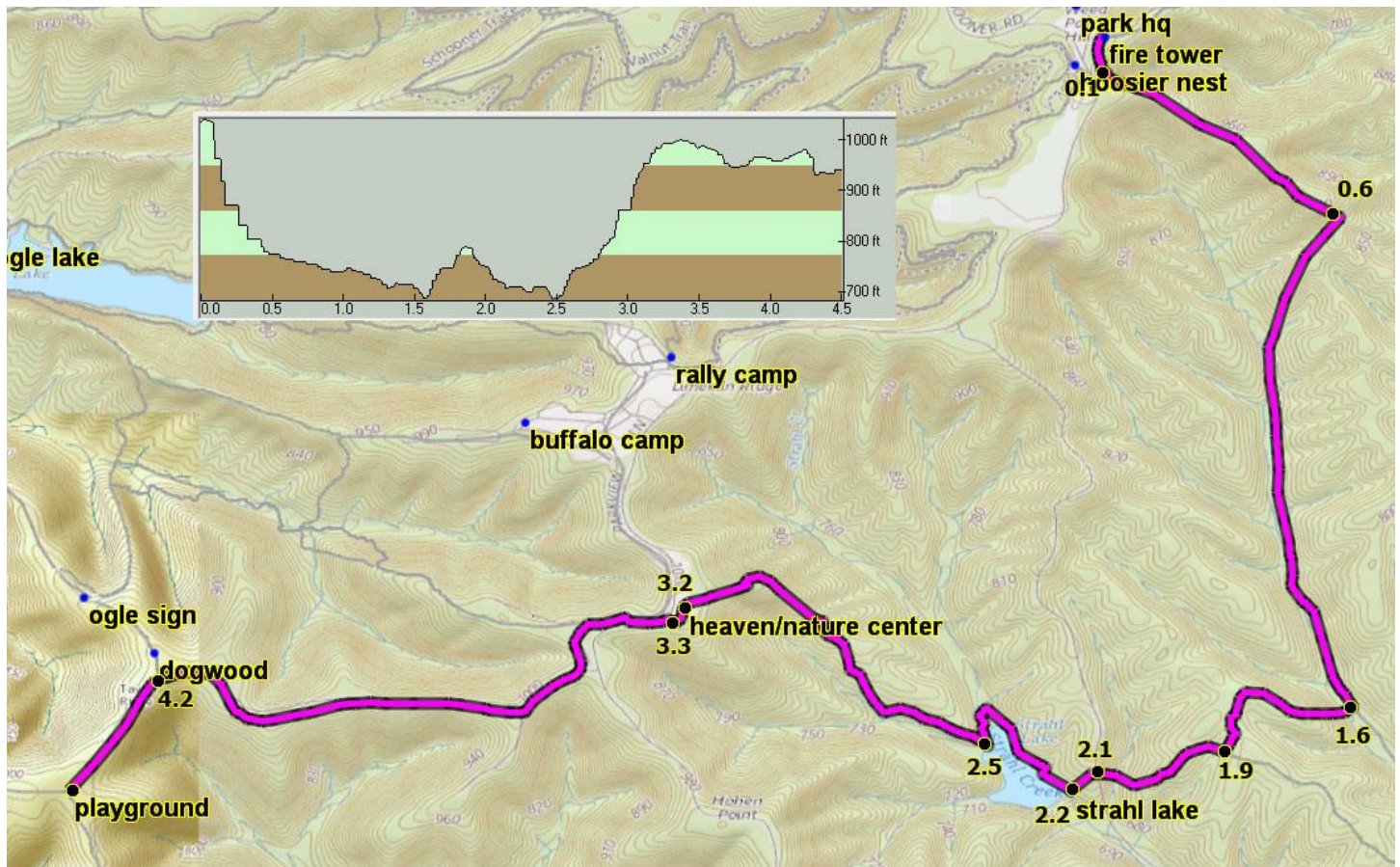
3.2 stay straight



## I - Fire Tower to Playground

4.5 miles

+510/-600



South along park road from exchange

0.1 cut through gate & head down horse trail

0.6 turn RIGHT on horse trail

1.6 head right & leave horse trails across small grassy field into off-trail excitement. Soon join vague single track

1.9 Turn RIGHT on the old 10 O'Clock line; it's still a sorta vague single track

2.1 pop out of woods at Strahl Lake access road; straight across: CAUTION

2.2 turn right at lake trail and go about halfway around lake counter-clockwise

2.5 turn hard right up Stairway to Heaven

3.2 Bypass Nature Center, LEFT along park road

3.3 RIGHT thru fence then LEFT along Taylor Ridge Campground road

4.2 Stay LEFT on campground road, bypass Dogwood Circle

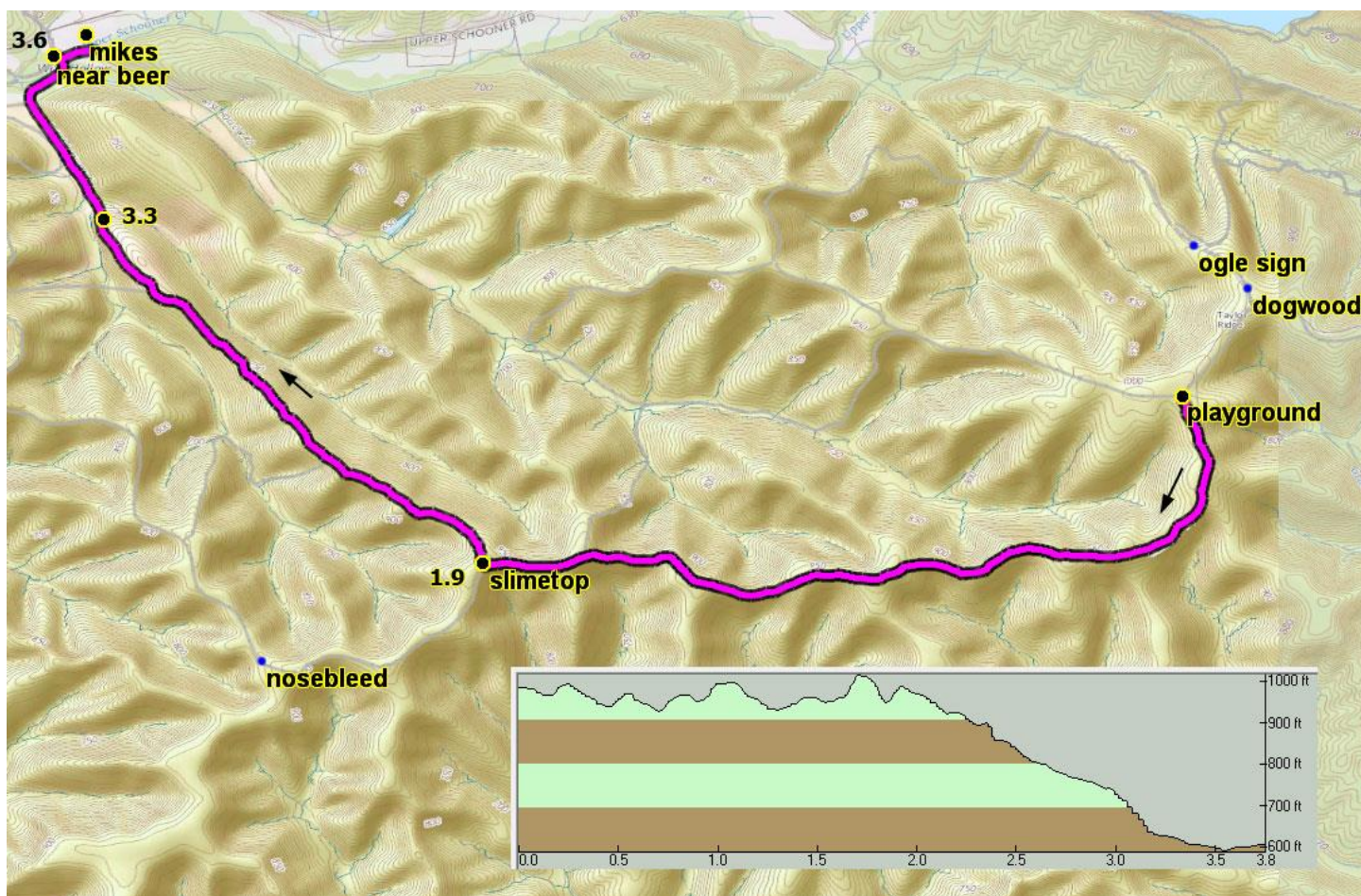
4.5 Arrive Playground Aid



## J - Playground to Finish

3.8 miles

+310/-690



From Playground, South thru the gate onto the horse trail

1.9 Exit horse trail RIGHT into the Slime

3.3 Cross the field & down the hill to gravel road

3.7 LEFT across bridge then RIGHT to the Finish